


THE SKYLINE

Voula, Greece



A modern, multi-story apartment building with a light-colored facade and dark grey accents. The building features several levels of balconies with glass railings. Each balcony has a potted plant, including a large olive tree on the second and third floors. The top of the building is covered in a lush rooftop garden with various plants and flowers. The building is set against a clear blue sky with a few wispy clouds. In the background, there are other residential buildings, including one with a red-tiled roof, and several palm trees. The overall scene is bright and sunny, suggesting a coastal or tropical location.

LIVE THE LINE BETWEEN
SKY AND SEA.





ABOUT US

At O Properties, we develop residential projects in Greece focused on prime locations, architectural quality, and long-term value. Our portfolio spans selected areas across Athens and the Athens Riviera, including Voula, one of the most desirable coastal residential districts. Each development combines thoughtful design with alignment to Greece's Golden Visa programme, offering international buyers both lifestyle and strategic investment opportunity.

INVESTING IN EUROPE

The Greek Golden Visa allows **non-EU investors to obtain European residency through real estate investment**, offering long-term flexibility and access to the EU.

At A Glance:

- 5-year renewable residency in Greece
- Visa-free travel within the Schengen Zone
- Includes spouse, children (up to 21/24 if dependent), and parents of both partners
- No minimum stay requirement
- Eligibility for citizenship after 7 years (subject to conditions)

The program allows investors to enter a well-established real estate market with potential for both capital appreciation and rental income.

O Properties offers carefully selected, Golden Visa-eligible residences, with end-to-end support across acquisition, legal coordination, and residency processing.



LIFESTYLE

Located in Voula, one of the most prestigious residential areas along the Athens Riviera, this project combines coastal proximity with established neighbourhood quality.



LOCATION

Voula Center · 3 min
Beachfront · 6 min
Glyfada · 8 min

Ellinikon · 15 min
Syntagma Square · 25 min
Athens Airport · 35 min



S K Y L I N E



RESIDENCES

Each residence is uniquely designed, with every floor offering its own layout, perspective, and character—creating homes that feel personal, refined, and one of a kind.





RESIDENCE A1
First Floor

RESIDENCE A1

First Floor

Full-Floor Luxury Residence

196 m² · 4 Bedrooms · Full-Floor Privacy

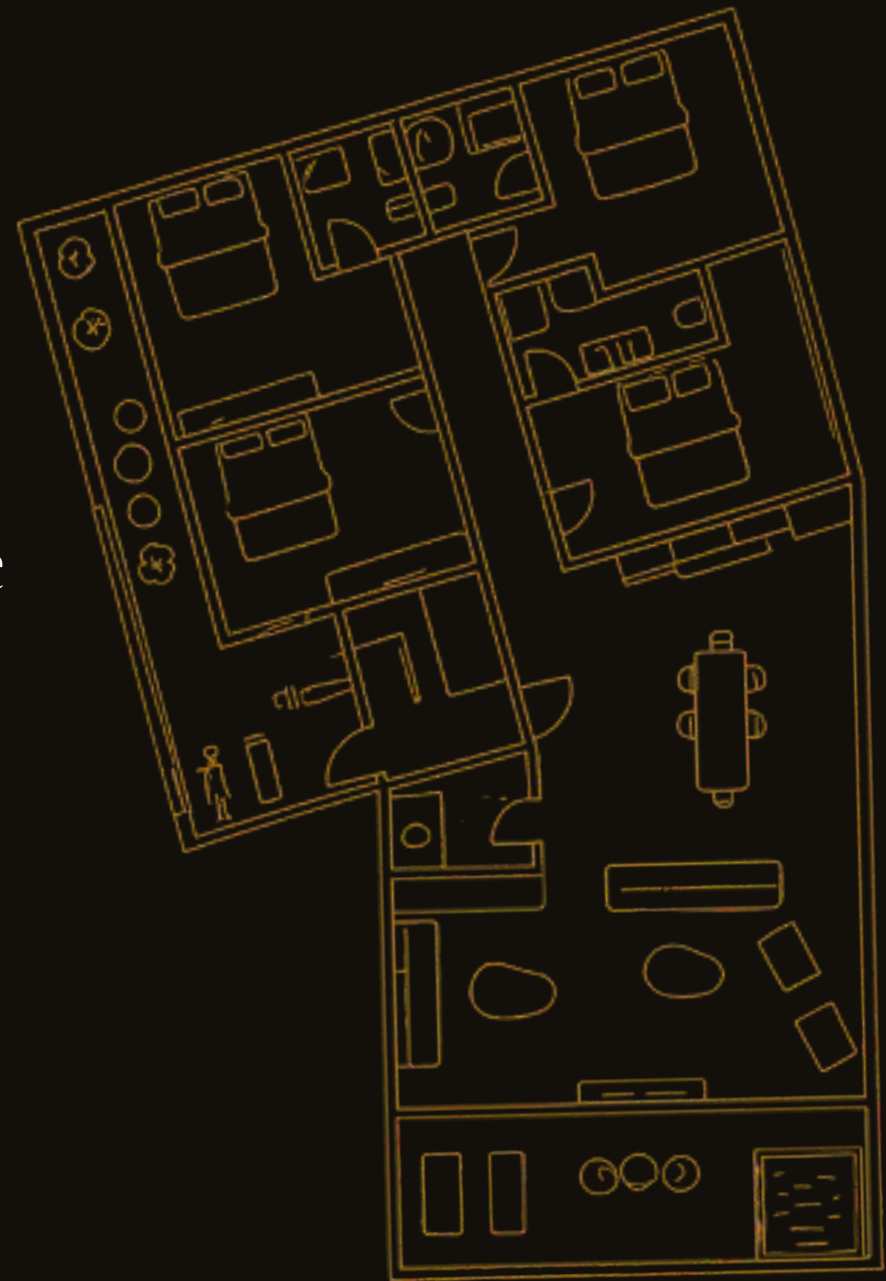
Panoramic sea views

Spacious open-plan living

Large sea-facing balconies

Luxury kitchen and bathrooms

Exceptional natural light





INTERIORS

Group Features:

Comfort (VRV A/C, smart home)

Materials (marble, wood)

Performance (A+, insulation, glazing)











RESIDENCE A₂
Second Floor

RESIDENCE A₂

Second Floor

Full-Floor Luxury Residence

192 m² · 4 Bedrooms · Full-Floor Privacy

Large sea viewing balcony

Direct panoramic sea view

Bright, airy atmosphere

Luxury fittings throughout kitchen and bathrooms

Superior natural light from large facade glazing





INTERIORS

Group Features:

Comfort (VRV A/C, smart home)

Materials (marble, wood)

Performance (A+, insulation, glazing)









RESIDENCE A₃
Third & Fourth Floor



RESIDENCE A₃

Third & Fourth Floor

Two-Floor Luxury Duplex Penthouse Residence

150 m² total · Duplex · Panoramic terraces

Internal staircase connecting the two levels

Panoramic terraces on both floors

2-3 bedroom layout with master suite

Option for rooftop jacuzzi or outdoor lounge

180° sea and sunset views

Superior natural light from large façade glazing





INTERIORS

Group Features:

Comfort (VRV A/C, smart home)

Materials (marble, wood)

Performance (A+, insulation, glazing)









