

SOUTHSIDE

RESIDENCE



 Properties
DEVELOPMENTS

Golden Visa Eligible
Residences

ABOUT US



At O Properties, we develop residential projects in Greece focused on prime locations, architectural quality, and **long-term value**.

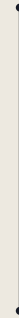
Our portfolio spans selected areas across Athens and the Athens Riviera, including Voula, one of the most desirable coastal residential districts.

Each development combines thoughtful design with alignment to **Greece's Golden Visa programme**, offering international buyers both lifestyle and strategic investment opportunity.





OUR DEVELOPMENT PHILOSOPHY



We approach each project with:

- Strategic location selection
- Contemporary architectural identity
- Efficient and functional layouts
- Refined interior detailing
- Long-term investment positioning

Every development is designed to balance lifestyle quality with financial resilience.

LIFESTYLE & LOCATION

Our developments offer the perfect balance of city convenience and coastal living. Located in prime Athens and Athens Riviera districts, residents enjoy access to cultural hubs, dining, shopping, schools, and the sea — combining everyday comfort with long-term value.

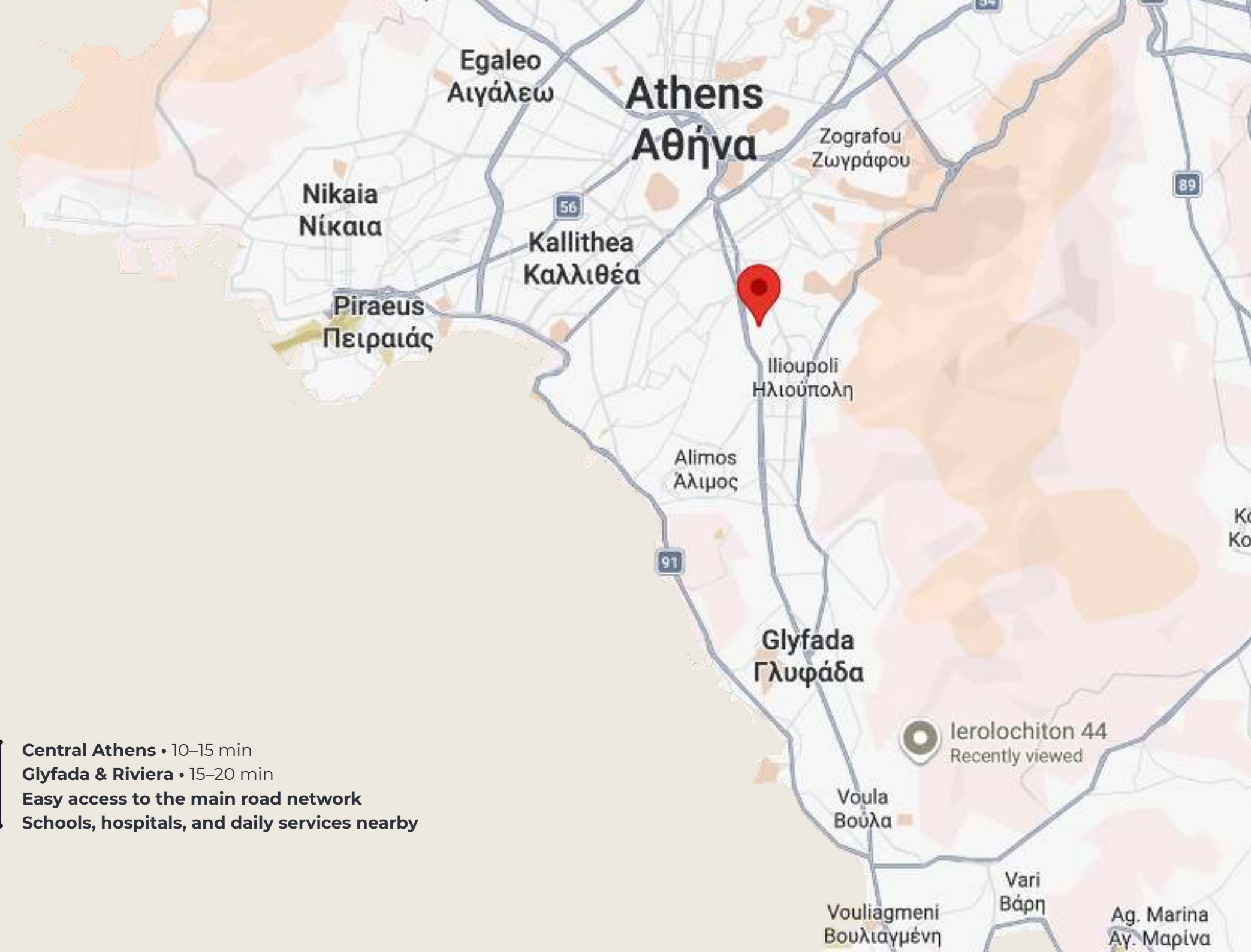


SOUTHSIDE

RESIDENCE

Positioned within a well-connected residential district of **Athens**, this development benefits from strong infrastructure and seamless accessibility. Offering *Golden Visa eligibility*, From €250,000, secure a residential property with residency for the investor and family — no minimum stay required — with a renewable **five-year** permit.

37.94267° N,
23.74404° E



Central Athens • 10–15 min

Glyfada & Riviera • 15–20 min

Easy access to the main road network

Schools, hospitals, and daily services nearby



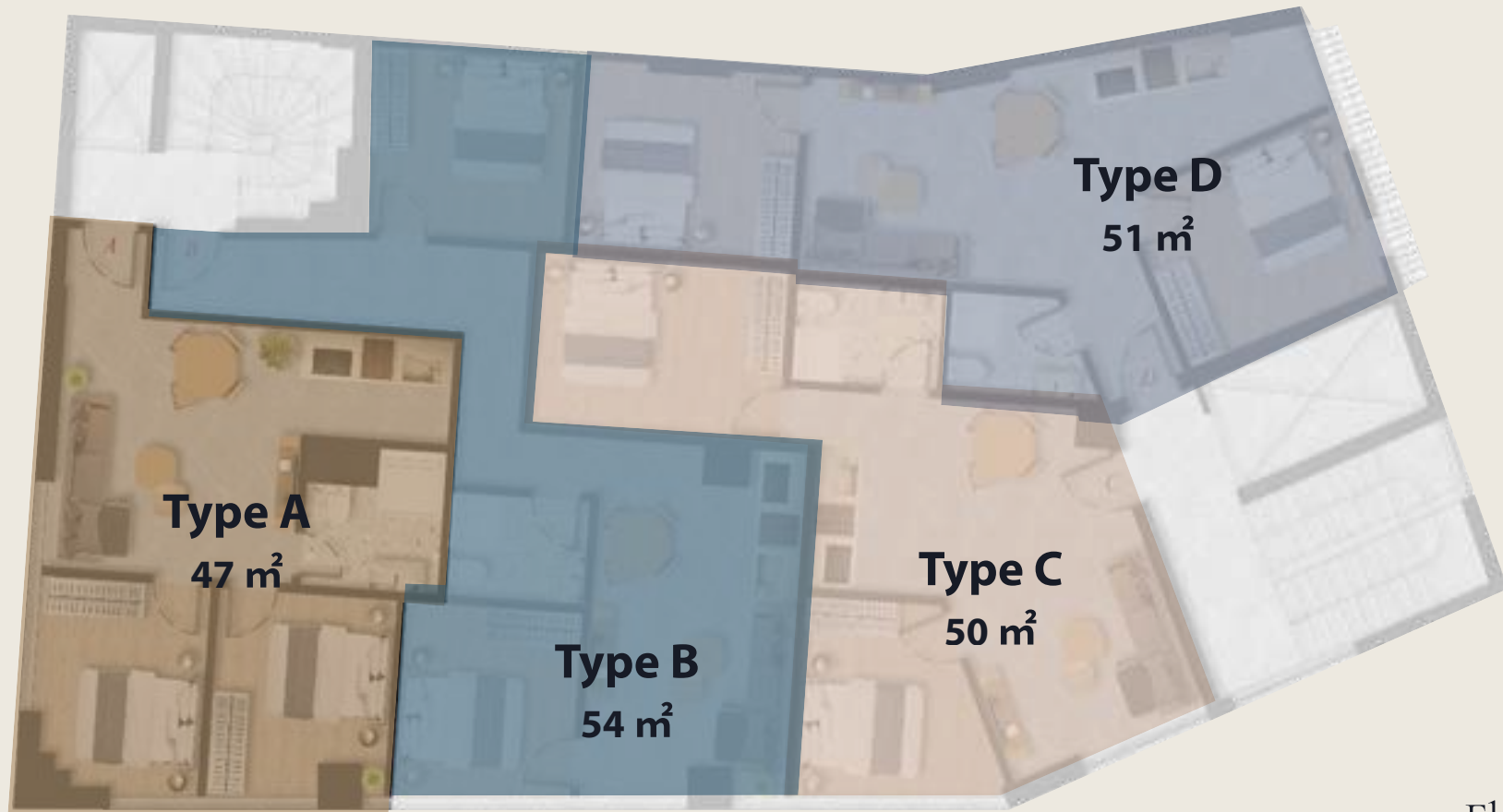
PROJECT — SOUTHSIDE



Located in the dynamic South Athens corridor, this residence benefits from a prime position between the city centre and the Athens Riviera. The area continues to see strong residential growth, supported by infrastructure upgrades, lifestyle amenities, and sustained demand.

The project also offers **Golden Visa eligibility**, presenting international buyers with the opportunity to combine strategic investment with long-term European residency benefits.

APARTMENT DISTRIBUTION



Floors 1–4
4 units per floor
Types A, B, C, D
Efficient 1–2 bedroom layouts

RESIDENCE A

47 m² · 2 Bedrooms

- Thoughtfully designed layouts
- Light-filled interiors
- Private Balcony
- Excellent rental positioning



RESIDENCE B

54 m² · 2 Bedrooms

- Thoughtfully designed layouts
- Light-filled interiors
- Private Balcony
- Excellent rental positioning



RESIDENCE C

50 m² · 2 Bedrooms

- Thoughtfully designed layouts
- Light-filled interiors
- Private Balcony
- Excellent rental positioning



RESIDENCE D

51 m² · 2 Bedrooms

- Thoughtfully designed layouts
- Light-filled interiors
- Private Balcony
- Excellent rental positioning





INTERIORS

Our designs combine clean lines, abundant natural light, and efficient layouts with private outdoor spaces, premium finishes, smart home technology, and high-performance energy features, creating interiors that are both functional and timeless.





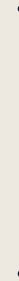








DESIGNED FOR VALUE



Our developments are aligned with ***Greece's residency-by-investment framework***, offering qualifying buyers access to long-term European residency through real estate acquisition.

Beyond eligibility, our focus remains on:

- Sustainable rental demand
- Desirable micro-locations
- Strong resale positioning
- Market-aligned pricing